



London Procurement
Partnership

Candidate Information Pack

I need the **right commercially-focussed and business-minded** people to **deliver the new strategy and drive benefits** for customers

Michael Pace
Managing Director



Dear Applicant,

My name is Michael Pace and I joined in October last year as the managing director at NHS LPP. You will hopefully have read about what we do as a procurement partner for the NHS but I want to tell you about our plans for the future - and why it is important on this next phase of recruitment to find more of the right people to help me shape and deliver our new vision.

Our customers are facing growing financial and service pressures within a complex and changing landscape. The landscape is also changing for us as a service provider - with big transformation in procurement across the entire public sector. This transformation is absolutely the right thing for the NHS – but with it, comes the need for us to think differently about how we continue to deliver a service that is not only future-proof, but also strategically aligned with the NHS Long Term plan and all the transformation that is happening around us.

My team and I developed a new vision that is focused on NHS LPP being the commercial partner of choice for our customers and our suppliers, a partner that supports our customers with tailored solutions – exploring emerging initiatives and technologies that better meet their needs and importantly, the needs of the patient.

Our new strategy is about an enhanced account management service; excelling at category management and offering consultancy support in an innovative way.

I have recently appointed into the high level structure and now I need to recruit the right commercially-focussed and business-minded people into the remaining positions to help me and the team deliver the new strategy and aggressively drive more benefits for our customers. People who want to live our vision and values – people who want to understand the landscape we operate in, and people who are responsive to the needs of our customers.

So if being part of shaping our new strategic direction appeals to you, I would encourage you to apply. We are keen to meet people who thrive on delivering ambitious target-driven outcomes. And most importantly, people who are passionate about delivering the service excellence our NHS deserves.

I hope you are as excited as me about the fantastic opportunities we have on offer and I wish you success with your application.

Our Role

NHS London Procurement Partnership (LPP) develops and manages collaborative procurement projects on behalf of its members, including acute, community and mental health trusts, as well as CCGs. NHS LPP has a number of members outside of London.

NHS LPP undertakes collaborative procurement within the normal NHS membership but also working with other public sector bodies, advising and managing their procurement processes to deliver benefit to the wider public sector. NHS LPP will continue to develop as a centre of commercial excellence that delivers significant and sustainable cost and service improvements to all stakeholders primarily in the London NHS economy but also outside London. Along with CCGs, there are around 46 organisations within the NHS LPP membership.

As an organisation NHS LPP has been hosted by Guy's & St Thomas' (GSTT) NHS Foundation Trust since 2012 and provides the legal framework and supporting services under which NHS LPP operates. However, NHS LPP is a membership organisation funded and governed by its members and not GSTT. NHS LPP staff are employed by GSTT.

Organisational Values

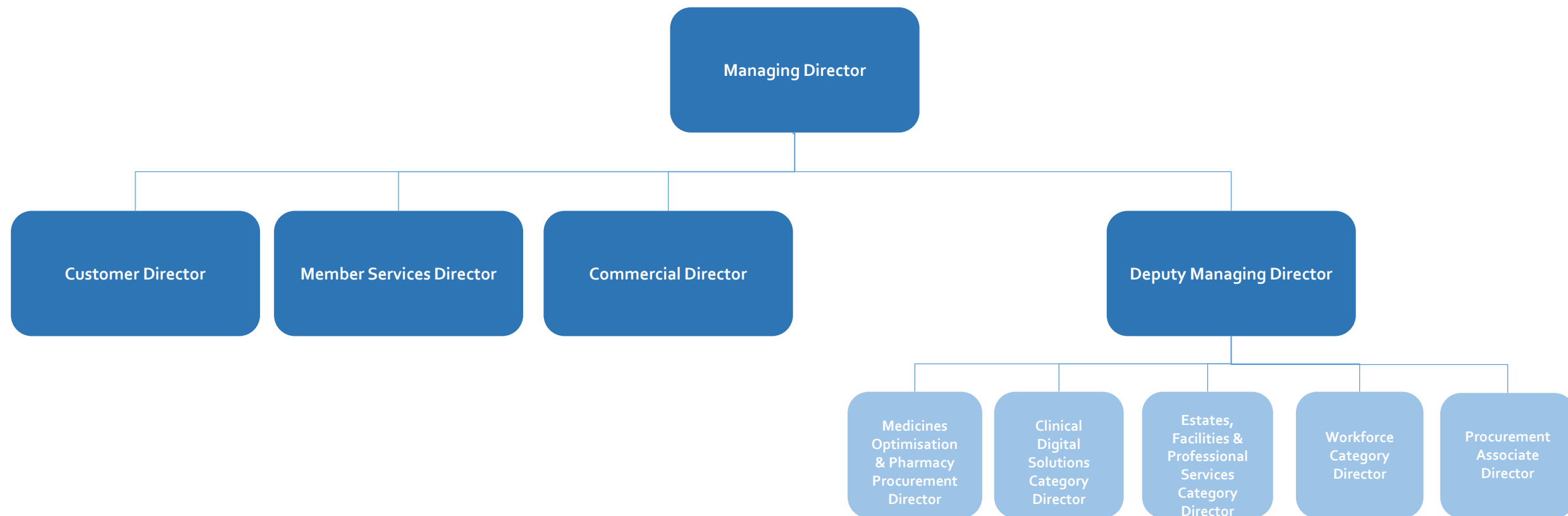
Our **values** help us to define and develop our culture; **what we do** and **how we do it**. It is important that you understand and reflect these values throughout your employment with the Trust.

Staff will:

- **Put patients first**
- **Take pride in what they do**
- **Respect others**
- **Strive to be the best**
- **Act with integrity**

Our Vision

"To be the best in class procurement partner of choice for the NHS and the public sector. Through our expertise and facilitated collaboration, we are responsive to the needs of our members & customers to deliver integrated outcomes for patients and the public."



Vacancy List

NHS LPP is recruiting for the following roles:

- **Senior Category Manager (Band 8b)** - Clinical Digital Solutions
- **Category Manager (Band 8a)** - Clinical Digital Solutions
- **Senior Category Manager (Band 8b)** - Workforce
- **Category Manager x 2 (Band 8a)** - Workforce
- **Senior Category Manager (Band 8b)** – Estates, Facilities & Professional Services
- **Category Manager (Band 8a)** – Estates, Facilities & Professional Services
- **Category Manager x 2 (Band 8a)** – Member Services
- **Contract Manager x 2 (Band 8b)** – Procurement Shared Services
- **Procurement Officers x 2 (Band 7)** – Procurement Shared Services
- **Communications Manager (Band 8b)** – Customer Team
- **Account Managers x 2 (Band 8a)** – Customer Team
- **Campaigns Manager (Band 7)** – Customer Team
- **Business Manager (Band 7)** – Commercial Services
- **Senior Strategic Analyst (Band 7)** – Commercial Services
- **Strategic Analyst (Band 6)** – Commercial Services
- **Business Support Officer x 3 (Band 5)** – Commercial Services

How to Apply & What to Expect

Guy's & St Thomas' NHS Foundation Trust Values

Further Information

To apply for these positions please click on the following link:

<https://www.guysandstthomas.nhs.uk/careers/careers.aspx>

Search for the relevant vacancy and then click apply.

As part of the application process you will be required to complete an on-line application form.

If shortlisted you may be required to complete some on-line testing prior to interview. All the details will be sent to you with a systems log in and clear instructions.

These tests could include one or more of the following:

- Situational Judgement Testing
- Logical Reasoning Testing
- Psychometric Testing
- Values & Behaviours Testing

Following this you will be invited to attend an interview. If you are required to prepare a presentation you will be sent the information at least one week in advance.

How to Apply

**Guy's & St Thomas' NHS Foundation Trust
Values**

Further Information

Our values help us to define and develop our culture – what we do and how we do it.



How to Apply

If you have any questions about applying for these roles please contact:

**Civil Service Commission's Recruitment
Principles**

Sophie Low, Head of Recruitment
sophie.low@gstt.nhs.uk

Further Information